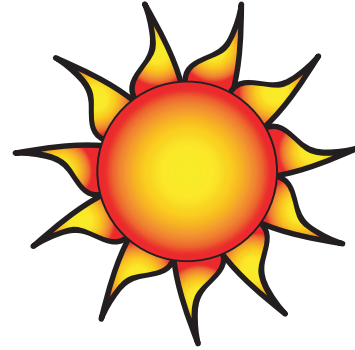


## What to Expect After Your Windows Have Been Tinted . . .

### Film Dry-Out Time

During the installation process, your dealer will remove as much of the mounting solution as possible, although a small amount will remain. Trapped installation moisture can cause small water bubbles and/or a slightly cloudy look. This is normal and should be expected. Do not attempt to pierce a water bubble during the dry-out period. Water bubbles and the cloudy look will eventually dissipate. Attempting to pierce a water bubble in an effort to drain moisture will damage your film. This damage is not covered by the warranty.



### Climate Conditions and Dry-Out Time

Cold and non-sunny weather conditions can lengthen the dry-out time. Warm weather and direct sunlight exposure will shorten the dry-out time. If slow drying occurs, do not become alarmed. Film type and climate conditions will determine how long the process will take. Thicker films, like safety films, or a humid environment will lengthen the dry-out period, but the trapped moisture will eventually dry out completely.

### Cleaning

Do not clean the film for 30 days after installation. This will help secure proper curing of the special mounting adhesive to the glass.

### Cleaning Solutions

Most glass cleaners will work well, although a good cleaning solution for window film is 1/2-ounce of liquid dish soap or baby shampoo added to 1 quart of fresh water. **Do not use ammonia-based products;** they will break down the adhesive in the film.



### Cleaning Materials

Always use fresh, clean, soft materials to wash and dry your window film surfaces. A soft cloth or a clean synthetic sponge is recommended for washing the window film, followed by another clean, soft cloth or soft rubber squeegee for drying.

To avoid scratching the film, do not use bristle brushes, abrasive scrubbing sponges, or any cleaning materials that may have been contaminated with dirt particles. This often occurs when washing interior and exterior windows with the same cleaning materials. Some brands of paper towels are coarse enough to put fine scratches in the film, even films with a protective hard coat finish. While these scratches may be too thin to be seen initially, they can damage the polished look of the film over time.